



WaterMedia

June 2018



Things Left Behind by Kathy Timmins

RIWS HAS YOUR BACK

Recently, we've been catching up with our members at art galleries across Rhode Island and Massachusetts where they have been exhibiting selections of their art work. Although we love seeing their pieces displayed on our walls best, it's always fascinating how a different space can give us a different perspective of an artist's style, not to mention introduce us to new artists. Furthermore, it's a great way to support our members and the art community as a whole.

Although we can't make it to every show, there are countless other ways we can support you, our members: by selling your cards and prints in our gallery, through social media, this newsletter, our photo service, and old-fashioned word of mouth. Of course, the best way to promote your work is to exhibit it.

Our next Open Juried Show, *Light & Shadow*, is currently open for entry, so don't miss the opportunity to possibly have your work selected for display in our gallery. We will soon have information on our Small Works Fundraiser (open to members only) and you will also be receiving a postcard through the mail regarding our 23rd National Watermedia Competition, so don't be shy... apply! And don't hesitate to reach out to us and let us know how we can further help you.

President's Corner

Top 10 Reasons you should submit to the RIWS National Show:

1. Every painting submitted makes it a better show.
2. Every painting submitted supports the gallery.
3. Did I say, every painting submitted makes it a better show.
4. Because you are telling all your artist friends to submit a painting too (right?).
5. You could be one step closer to being a Signature Member.
6. If you are a Signature Member, you owe it to the membership to show your work.
7. Your painting will look great on the wall.
8. Family and friends will come to see your work.
9. You could win a prize (\$5000 in cash prizes!).
10. You will feel great about it - trust me.

August 3rd - that's the date!

Jackie Habig, President

Director's Corner

If you haven't made it to RIWS for a visit this spring, you most definitely should. There were two members that came in to the gallery last week and explained how they had come to the park to paint, but couldn't find a scene that wasn't all green. I feel like that is a good summation of what the park looks like right now. The light peaks through the trees and casts some incredible shadows in the late afternoon and the park really comes alive. It reminds us all what a special place we have here.

Also, speaking of light and shadows, that is the theme for the current Call For Entry for our next open juried show. Light and shadow can be infinitely interpreted, so I encourage everyone who is interested to apply. We're continuing to use Smarter Entry to submit online. That link can be found on our website. The deadline for that is June 9th so be sure not to miss out! If you have any trouble or would just like some help with it, please feel free to give us a call. In addition, keep your eye on your mailbox as we are mailing out National Show postcards next week. We're thrilled to once again be giving away \$5,000 in cash prizes. Lastly, be sure and take a look at all the upcoming workshops we have coming up. We're thrilled to announce that we have workshops ranging from 1 to 4 days in a wide variety of mediums and prices. Be sure and look through the full newsletter to see what's coming up next!

Sam Green, Gallery Director

RIWS Member Interview

FRANK ROBERTSON



I've always loved to draw. When I was young I would fill "composition books" with drawings, especially cartoon characters. I also created my own cartoon characters; like "TNT Tommy". I was very fortunate when I got to high school. My art teacher was also a commercial artist creating ads on Madison Avenue in NYC. He always encouraged me to do more difficult drawings, including pen and ink wash pictures. However, when I was in St. Catherine of Siena grammar school I wasn't as fortunate. I just couldn't stop drawing, even in the margins of text books. Those Dominican nuns really don't have much of a sense of humor.

Like the pen and ink drawings I would study and admire in newspapers and magazines, I loved the look of watercolors. I had hoped to go to art school but Uncle Sam had other ideas. So the choices were to get drafted for a two-year hitch in the US Army or join for three years and get an education. So I joined and qualified for a year's enrolment in an electronics program.

Soon after getting discharged from the army, I got a job at ITT Federal Electric, Co. Within weeks after that, I got married. I was assigned to Westover strategic Air Force base where I worked for three years as a civilian contractor. In the first three years we had two of our four sons. Then I got another job at the Foxboro Co., located in Foxboro, MA where I worked for thirty-seven years as an instructor, educational services manager, marketing communications manager and engineering manager. I also earned my undergraduate and graduate degrees at URI and Providence College.

It was not until 2005, when I retired, that I joined RIWS. During those initial years I took watercolor workshops and classes. I was now in "seventh heaven", doing what I had always wanted to do. My biggest influences were Tony Couch, Jean Grastorf, Al Albrekton, Carole Berren and the many friends I've made at the RIWS and other art organizations. Painting together and critiquing each other's work is both fun and extremely helpful.

Like everyone, I started as an Associate member at the RIWS. My first objective (i.e., challenge) was to become an Artist Member. I remember walking into the

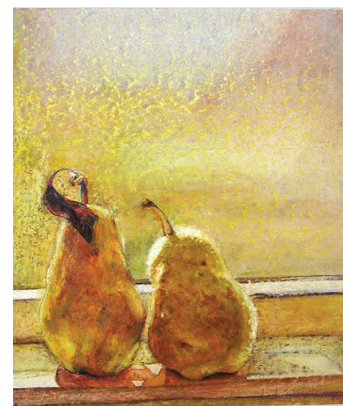
gallery with my wife to see my first RIWS National show. The paintings were so well done and beautiful. I couldn't stop looking at them and thinking: Will I ever be able to do that as well?

A little later I took a workshop with Tony Couch (one of Ed Whitney's protégés) wherein he explained and demonstrated the principals and elements of art and the many techniques used to create beautiful watercolor paintings. Tony made an inspiring comment to me. He said, "Frank when you have 1,000 stinkers under your bed, you've just begun to paint". I quickly counted how long that may take and started painting five or six watercolors almost daily.

The workshops, classes, painting with other artists and practice paid off. Within two years I became a RIWS Artist Member and a Signature Member after four years of entering paintings in RIWS juried and national shows. I also earned many awards and began selling my artwork. It's absolutely true that becoming an accomplished artist is NOT a destination. It's a journey. One that I'm still on and continuing to enjoy!

My goal is simple. I want to create attractive paintings that you would be proud to display in your home; with images that will please your eye and lift your spirits. I want to help viewers celebrate the splendor of the world in which we live. This, I believe, is the power of art!

I have expanded the mediums that I paint with to include watercolor, acrylic and oil paints. They are all fun to use either in the studio or (my favorite) plein air painting. I'll paint anything that inspires me and let the subject matter determine how I paint it. I always attempt to paint my impression (or what I like) about the subject and not just record what I see. When I've accomplished the painting's goal(s), I consider it done. If it's good, I'm happy. If it's not so good, I'm challenged to create more and better works of art. For me, art and painting is just about playing with my toys and having fun! I hope you are doing the same.



Two Sweeties

Current Exhibition



You are invited to East Side Art Center's Second Bi-Annual Show at the Rhode Island Watercolor Society...

...a show so good that, if you have already made other plans, you might consider changing them!

May 13 - June 21



2-DAY BEGINNERS PASTEL WORKSHOP

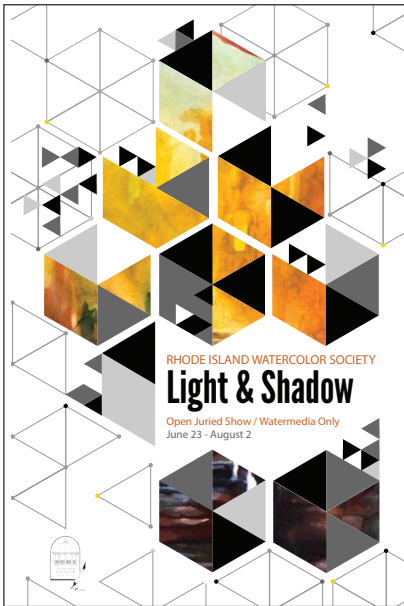
with Renee Finlay

Date and time:

June 14-15, 2018 /
10am-1pm each Day

Fee:

RIWS Members \$115 /
Non Members \$130



RHODE ISLAND WATERCOLOR SOCIETY

Light & Shadow

Open Juried Show / Watermedia Only
June 23 - August 2



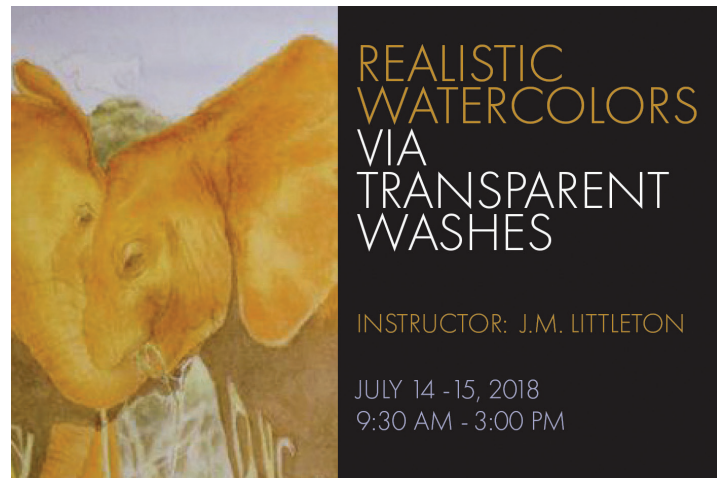
Vladislav Yeliseyev

3-Day Watercolor Workshop
September 12-14



JACK HARAN: BASIC WATERCOLOR SIMPLIFIED

3 Day Workshop
Wednesday-Friday
June 20-22
10:00am - 4:00pm



REALISTIC WATERCOLORS VIA TRANSPARENT WASHES

INSTRUCTOR: J.M. LITTLETON

JULY 14 - 15, 2018
9:30 AM - 3:00 PM



RIWS NATIONAL SHOW 2018

CALL FOR ENTRY!!!

- WATERMEDIA ONLY -

OPEN TO: Any artist residing in the USA

JUROR:

Vladislav Yeliseyev

EXHIBITION DATES:

September 15 - November 8

OPENING RECEPTION:

September 15, 2-4pm

SUBMISSION DEADLINE:

August 3

NOTIFICATION OF ACCEPTANCE:

August 15

DROP OFF / DELIVERY:

August 17 - September 8

WINNERS NOTIFICATION:

September 13

PICK UP / SHIPPING:

November 9 - 24



ART STUDIO FOR KIDS

5 DAY CAMP WITH ELIZABETH O'CONNELL

Mon-Fri, August 6-10, 1:00 - 3:00pm

Class size limited to 10

RIWS members' children \$90 / Non-member \$100

All materials included

Dates to Remember

May 13 - June 21	East Side Arts Center Invitational Exhibition
May 26 - June 9	Light & Shadow Open Juried Show Online Submission
June 14 - 15	Renee Finlay: Beginners Pastel Workshop
June 20 - 22	Jack Haran: Basic Watercolor Simplified Workshop
June 21	Light & Shadow Open Juried Show Drop Off Deadline for Accepted Pieces
June 22 - July 7	East Side Arts Center Invitational Pick Up
June 23	Light & Shadow Open Juried Show Opening Reception, 2-4pm
June 23 - August 2	Light & Shadow Open Juried Show Exhibition
July 14 - 15	J.M. Littleton: Realistic Watercolor via Transparent Washes Workshop
August 3	23rd National Watermedia Competition Submission Deadline
August 4	Rhode Island Small Works Fundraiser Opening Reception, 2-4pm
August 4 - September 13	Rhode Island Small Works Fundraiser Exhibition
August 6 - 10	Elizabeth O'Connell: Art Studio for Kids Workshop
August 15	23rd National Watermedia Competition Notification of Acceptance
August 17 - September 8	23rd National Watermedia Competition Drop Off/Delivery
September 12	23rd National Watermedia Competition Jurying of Awards

DATES ARE
SUBJECT TO
CHANGE. PLEASE
VISIT OUR WEB
SITE AT
WWW.RIWS.ORG
FOR THE MOST
UP TO DATE
INFORMATION.

Upcoming Summer Workshops

JACK HARAN: BASIC WATERCOLOR SIMPLIFIED WORKSHOP

3 DAYS (BEGINNERS WELCOME)

WEDNESDAY-FRIDAY, JUNE 20-22

10:00AM-4:00PM EACH DAY

MEMBERS \$250 / NON-MEMBERS \$275



J.M. LITTLETON: REALISTIC WATERCOLOR VIA TRANSPARENT WASHES WORKSHOP

2 DAYS (INTERMEDIATE - ADVANCED)

SATURDAY-SUNDAY, JULY 14-15

9:30AM-3:00PM EACH DAY

MEMBERS \$225 / NON-MEMBERS \$250



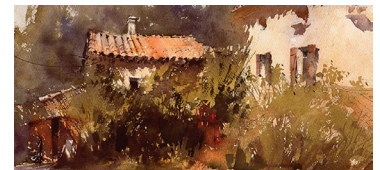
VLADISLAV YELISEYEV: IMPRESSIONS IN WATERCOLOR WORKSHOP

3 DAYS (INTERMEDIATE - ADVANCED)

WEDNESDAY-FRIDAY, SEPTEMBER 12-14

9:00AM-4:00PM EACH DAY

MEMBERS \$425 / NON-MEMBERS \$475



Miscellaneous

CONGRATULATIONS...

...to RIWS Signature Member, Stephen Ellery Manning, on winning the prestigious *Rosemond Smith Bouve Memorial Award for Watercolor Portraits* at the North Shore Arts Association of Gloucester, MA for his painting "Clementines." Stephen's portrait was painted on heavy Arches paper using Grumbacher Watercolor Paints and is 27"x35".

The young girl is the daughter of an American military family stationed in Spain. I lightly drew the image and then painted her face first. The clementines were my next challenge which I treated like a Still Life, along with the basket. Hands can be difficult so I really had to think about how to paint them in a soft blended way. I used my color wheel to choose complementary colors throughout the painting. I chose a flat matte black background that I had been developing for the last year. I painted it in stages and always took the time to stand back and make sure everything was correct. I used my eraser and did some scrubbing as needed. This took about a week to complete and I am very happy with the results. I have done hundreds of watercolor portraits since I joined the RIWS in 2012 and became a Signature Member in 2015. I am a self taught artist. My mother was a Fashion Illustrator and my twin sister is an accomplished artist in Boston and the North Shore. Thank you. - Stephen Ellery Manning.



RIWS Newsletter Information

Officers: President: Jackie Habig, Vice President: Leslie Godfrey, Treasurer: Dennis Finlay, Corresponding Secretary: Elinor Thompson

Directors: Evelyn Bernal, Paula Correia, Bernadette Pace, Liz Palter, Denise Petrin, Frank Robertson, Dyan Rook, Mary Wojciechowski

Editor: Sam Green, Gallery Director

Design & Layout: Andrea Braga, Gallery Assistant

Mail News Items to: Rhode Island Watercolor Society, 831 Armistice Blvd., Pawtucket, RI 02861

Email to: riwsgallery@gmail.com including "Newsletter Submission" in subject title