

## Classes, Workshops & Demos

**Monday Night Painting - Every Monday from 6-9pm**

**Members: \$5.00 Non-members: \$8.00**

Come Monday evenings for informal painting with signature members Joan Croce and Mary Wojciechowski. No instruction, just painting with fellow artists. A critique is held around 8pm.

**Monday Night Painting returns in the new year on January 4th, 2016**

## 2016 Spring Classes



### Splendors of Watercolor with Ben Macomber (8 Weeks)

*All Levels Welcome*

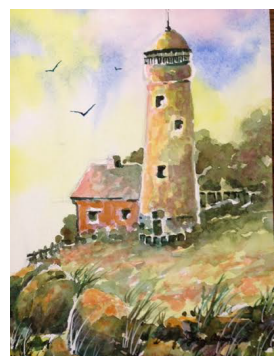
**Date and Time: March 29th-May 24th**

Tuesday Evenings from 6pm-8pm

**Members: \$105 Non-Members: \$135**

**Sign up deadline: March 22nd**

*A Refresher Class, Beginners Welcome!*



### Painting Elements of the Landscape with Jerry Aissis (6 Weeks)

*Advanced Beginner - Intermediate Level*

**Date and Time: March 30th-May 11th**

Wednesday Mornings from 10am - 12:30pm

**Members: \$ 105 Non-Members: \$ 135**

**Sign up deadline: March 23rd**

*Learn Jerry's techniques for beautiful landscapes.*



### Making Better Color Choices with Kris Occhino (6 Weeks)

*Intermediate level (Students must have taken 2 or more watercolor classes.)*

**Date and Time: March 26th-April 30th**

Saturday Mornings from 10am - 12:30pm

**Members: \$ 105 Non-Members: \$ 135**

**Sign up deadline: March 19th**

*Deepen your knowledge of color to create expressive works.*



### Wet on Wet Techniques in Watercolor with Evelyn Bernal (6 Weeks)

*Intermediate - Advanced Level*

**Date and Time: April 1st - May 13th**

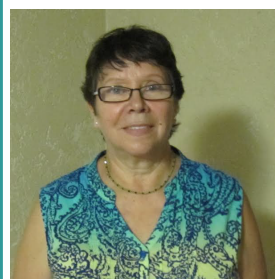
Friday Mornings from 10am - 1:00pm

**Members: \$ 105 Non-Members: \$ 135**

**Sign up deadline: March 25th**

*For skilled painters looking to learn more about wet on wet techniques.*

## Featured Signature Member:

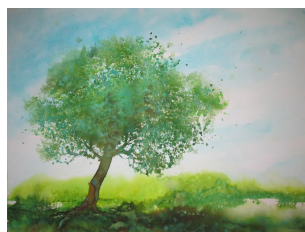


As far back as I can remember, color has fascinated and affected me deeply. This may be because I have been exposed to its vibrancy since a very early age. I was born and raised in the Dominican Republic where explosions of color happen everywhere you look under the intense Caribbean light.

Flowers were my first inspiration, not only because of their wonderful colors but also for their symbolic appeal. They carry the promise of life. I also love to paint forests, waterfalls and landscapes, they express nature's mysteries and it is their quiet sacredness that I try to capture in my paintings.

When I visit unspoiled places I embrace the visual as well as the spiritual and it is my intention to transmit their power and magical energy through my work. I have lived in the US for about 40 years and it is a pleasure to call New England my home.

*Evelyn will be teaching a class on her wet on wet technique at RIWS this spring!*



## 2016 Workshops

### Frank Francese

[www.ffrancese.com](http://www.ffrancese.com)

March 21 - 25, 2016 / Monday - Friday

5 - Day Watercolor Workshop

Members: \$550 Non-Members: \$625

### Janet Rogers

[www.watercolorsbbyrogers.com](http://www.watercolorsbbyrogers.com)

April 26 - 29, 2016 / Tuesday - Friday

4 - Day Watercolor Workshop

Members: \$450 Non-Members: \$525

### Lian Quan Zhen

[www.lianspainting.com](http://www.lianspainting.com)

May 19 - 21, 2016 / Thursday - Saturday

3 - Day Chinese Painting Workshop

Members: \$350 Non-Members: \$425

### Paul Leveille

[www.paulleveillestudio.com](http://www.paulleveillestudio.com)

June 23 - 25, 2016 / Thursday - Saturday

3 - Day Portrait Workshop with live models.

Any medium.

Members: \$325 + \$25 Model Fee

Non-Members: \$400 + \$25 Model Fee

### Lian Quan Zhen

[www.lianspainting.com](http://www.lianspainting.com)

July 13 - 15 / Wednesday - Friday

3 - Day Watercolor Workshop

Members: \$350 Non-Members: \$425

### Birgit O'Connor

[www.birgitoconnor.com](http://www.birgitoconnor.com)

October 17 - 21, 2016 / Monday - Friday

5 - Day Watercolor Workshop

Members: \$575 Non-Members: \$650

## Exhibitions

### Current Exhibition: New Artist & Signature Member Show and Associate Member Show

**Exhibition dates: January 17th - February 27th**

*Drop off: January 6th-10th*

*Opening Reception: Sunday, January 17th 2-4pm. Awards presented at 3pm.*

#### New Artist & Signature Member Show in the Main Gallery & Library

*New Artist Members*

*Donato Beauchaine Jane E. Newton*

*Judith Bertozzi Susan Paciello*

*Lorraine Bromley Steve Paulson*

*Judith Freeman Clark Jean Patiky*

*Leslie Godfrey Sheila Newquist Turner*

*William Heydt William Turner*

*Sue Kindregan Richard Weber*

*New Signature Members*

*Jane Brito Stephen Ellery Manning*

*Susan Rustad Smith Garnet Ricks*

#### Associate Member Show in the Classroom Gallery

*Entry fee: \$5.00*

1. Entrants must be Associate Members, and may submit 1 water media painting.
2. First, Second & Third place winners will each receive a voucher for one free entry into a 2016 Open Juried Show.
3. Winners will be chosen by the members of our Hanging Committee and will be announced at the opening reception at 3pm.
4. Acceptance into 3 RIWS Open Juried Shows, within a 3 year period, qualifies you to become an Artist Member!

JANUARY 2016						
SUN	MON	TUES	WED	THURS	FRI	SAT
					1	2
					CLOSED	
3	4	5	6	7	8	9
CLOSED	CLOSED		AVAILABLE FOR STUDIO RENTAL			
10	11	12	13	14	15	16
AVAILABLE	CLOSED		AVAILABLE FOR STUDIO RENTAL			
17	18	19	20	21	22	23
GALLERY RECEPTION	CLOSED		AVAILABLE FOR STUDIO RENTAL			
24	25	26	27	28	29	30
AVAILABLE	CLOSED		AVAILABLE FOR STUDIO RENTAL			
31	AVAILABLE					

FEBRUARY 2016						
SUN	MON	TUES	WED	THURS	FRI	SAT
	1	2	3	4	5	6
	CLOSED		AVAILABLE FOR STUDIO RENTAL			
7	8	9	10	11	12	13
AVAILABLE	CLOSED		AVAILABLE FOR STUDIO RENTAL			
14	15	16	17	18	19	20
AVAILABLE	CLOSED		AVAILABLE FOR STUDIO RENTAL			
21	22	23	24	25	26	27
AVAILABLE	CLOSED		AVAILABLE FOR STUDIO RENTAL			
28	29	AVAILABLE				

## Upcoming Exhibition:

### RIWS 2016 March Member Group Show

*Featuring work by Elaine Gauthier, Allen Halle & Stephen Ellery Manning*

*Artist, Signature and Lifetime Members interested in exhibiting, must sign up by January 6th, 2016*

**Opening Reception: Sunday, March 6th 2 - 4 pm**

Exhibition Dates: March 6th - March 31st, 2016

Pickup: April 1st - April 6th

## \*RIWS NEWS\*

Starting in 2016, members of the Rhode Island Watercolor Society will be offered the opportunity to rent out the classroom during gallery hours when there are no classes scheduled. Members can pay \$5 for up to 3 hours and Non-Members \$8 for up to 3 hours. (Participants must be ready to leave by 4pm.) Please see calendar for the available days in January and February and check our newsletter for updated calendars throughout the year.

Feel free to call or stop by the Gallery to sign up to use the classroom space! Drop-ins welcome, just be sure to sign in and pay at the front desk!

## New Policy for Gallery Sales starting in 2016:

Payment for sales of bin work and cards will be reimbursed after sales reach \$25. Anything over \$25 will be paid within 30 days