

Ted Nuttall: Portrait & Figure Painting 5-Day Workshop

Intermediate - Advanced Level
 Sept 28th - Oct 2nd (Mon-Fri)
 Each day from 9am - 4pm

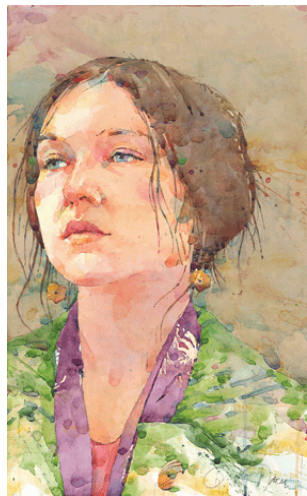
Members: \$500
 Non-Members: \$600

Signup Deadline: August 28th
Only 1 Spot Left!

In this workshop, students will learn about the instructor's background and philosophy regarding his paintings, watch daily painting demonstrations, discuss the importance of foundational drawings in paintings, and interact with the instructor.

The instructor's goal is to create an atmosphere that is both creative and supportive, as well as enjoyable with hands on learning that will provide specific and memorable information each participant can take home and use in their work.

Cancellation Policy: Cancellations made more than 30 days prior to the start of the event receive a full refund. Cancellations made 7-30 days prior to the start of the event will be charged a minimum of 50% of the original price. *No refunds will be given for any cancellations made less than 7 days before the scheduled date of the event; or after the event has started.



"Maybe Amelia" by Ted Nuttall



"Joseph's Yellow Glasses" by Ted Nuttall



"Girl In Motion" by Ted Nuttall

RIWS Fundraiser & Exhibition: 1,000 Works on Paper

OPEN TO ALL ARTISTS! You may donate an unlimited amount of works on paper. No mats or frames required! All work will be hung during this exhibition. *Size restriction of 9x12" or smaller.*All proceeds will go directly to RIWS to help fund our classes, workshops, demos and the daily operations of the gallery.

Drop off: June 2nd - August 13th

Fundraiser Party:
Saturday, August 15th from 4 - 7pm

Catered by B&M Catering

General Admission: \$20 Donating Artists: \$10



RIWS 21st Annual National Watermedia Competition

October 3rd - October 29th

Juror: Ted Nuttall

Submission Deadline extended to July 15th!

Open to all U.S. artists - Watermedia Only

Notification of Acceptance: September 1st

All accepted work must be at the gallery by Sept 15th!

Opening Reception:

Saturday, October 3rd 4pm - 6pm*

Artist Demo by Ted Nuttall at 4pm (Free)

Special Arrangements, Open Juried Show - Watermedia

June 27th - July 16, 2015

Pickup: July 17th - 21st

Upcoming Exhibitions:

Member Group Show: Featuring Nina Ackmann, Pat Cabalan, Naoko Kanno-Nagl,

Opening Reception:
Saturday, July 18th
from 4 - 6pm

Hollis Machala & Zilla Thomas

July 18th - August 13th

Drop off: July 14th - 17th
Pickup: August 14th - 18th



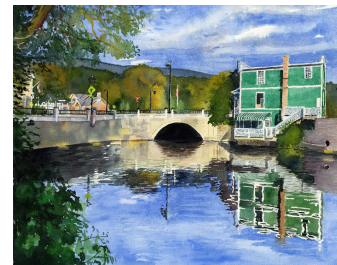
"Restless Sea" by Nina Ackmann



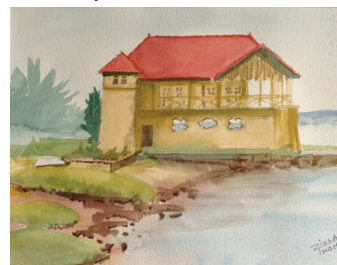
"Harbor Reflections" by Pat Cabalan



"Before Sunset" by Naoko Kanno-Nagl



"Mill Pond, Manchester, VT" by Hollis Machala



"Grampa's Boathouse" by Zilla Thomas

Nina Ackmann, in addition to being a professional artist, she is a psychotherapist and a retired elementary teacher. She has studied watercolor with Natalie Pfanstiehl, Carol Berren, Nancy Gaucher-Thomas, and Al Albrechtson to name a few. She is an artist member of the Providence Art Club, the Attleboro Art Museum, the South County Art Association, the Rhode Island Watercolor Society and the Wickford Art Association. She believes that as an artist, it is exciting to develop one's own palette, and to experiment with the visual effects of color combinations.

Pat Cabalan received her BS from the University of Rhode Island, Kingston, RI. She has studied and attended workshops with numerous nationally recognized artists. Pat is a Signature Artist Member of The Rhode Island Watercolor Society, Artist Member of the South County Art Association and Juried Artist Member of The Wickford Art Association. Since returning to Rhode Island in 2000, Pat has been painting the people and places that make New England unique. The region's cities, beaches and harbors are all favorite subjects, as are scenes of Narragansett Bay, Prudence Island and South County.

Naoko Kanno-Nagl was born in Fukushima, Japan and moved to the United States in 2002. She received an MBA in Finance from Saint Joseph's University, Philadelphia, PA. She became interested in painting in watercolor after she took a landscape painting class at Chester County Art Association, West Chester, PA. She attended the class for 5 years and learned "Plein Air" style watercolor painting from the same teacher, Mary Beaumont. She is a member of Franklin Art Association and Rhode Island Watercolor Society. Beautiful landscapes and her dearest twin tabby cats are a great inspiration in her art.

Hollis Machala is an emerging New England artist. She received her bachelor's degree in interior design from Mount Ida College in 2006. She is an Artist Member of the Rhode Island Watercolor Society. Her works are featured on her online store and she participates in annual art fairs. Hollis offers a vibrant view; using the medium of watercolor to vividly depict still life, landscapes, macro subjects (close ups) and architecture; using her graphic & interior design knowledge and travels as a guide to style and composition. In creating hand-painted visuals, it is Machala's mission to create and visually enhance life's interiors through watercolor.

Zilla Thomas grew up in Providence, graduated from Hope High School, and attended Rhode Island School of Design. She is a Signature Member of the Rhode Island Watercolor Society and past President and board member. She started watercolors with Marian Dunlop with a group of ladies at her church, and has loved it since her first brushstroke. She has accumulated many awards and ribbons, mostly from shows at the Wickford Art Association, RIWS, and Providence Art Club. Her work has been shown in many galleries, from Newport, Rhode Island to Andover, Massachusetts.