

## Dates To Remember

- May**
- Through May 7th:** 119th Annual Artist Members Show on exhibit
- May 8 - 12th:** Pick Up for 119th Annual Artist Member Show
- May 9:** RIWS will be CLOSED all day to prepare for the AWS Gala. Doors will open at 3:30pm for the American Watercolor Society's Opening Night Gala Reception. Demo starts at 4pm.
- May 15:** Deadline to submit items for the June Newsletter.
- May 16:** Al Albrektsen and Lavonne Suwalski's "Enthusiasm for Watercolor" Workshop from 9am - 4pm. Photography for National Show- 10am-3:30pm (by appt only)
- May 17:** Al and Lavonne's Workshop from 9am - 4pm. Photography for National Show- 10am-3:30pm (by appt only).
- May 24:** Gallery CLOSED- in Observance of Memorial Day
- May 25:** Gallery CLOSED - Memorial Day
- May 30:** Frank Costantino's Plein Air Painting Workshop from 9am-4pm. Photography for National Show- 10am-3:30pm (by appt only)
- May 31:** Frank Costantino's Plein Air Painting Workshop from 9am-4pm. Photography for National Show- 10am-3:30pm (by appt only)

## Art Festivals

### Barrington Art Festival 2015

Sunday, June 14th at 10:00am - 5:00pm

Sales Booths are available for Artist Rental

For more information, please call 401-247-1900 x 381

### Wickford Art Association's 53rd Arts Festival

July 11th & 12th in Wickford Village

Now accepting applications from Fine Artists

Please visit [www.wickfordart.org](http://www.wickfordart.org) for more information

## Member Announcements

**RIWS Artist Members, Nancy Godfray and Toni Peterson** will be in an exhibit featuring Spring watercolor florals, and Photography from Nigeria. The exhibit is on view from May 3rd through June 25th, with an artists reception May 3rd from 1pm to 3pm. The Gallery is at Temple Habonim is at 165 Meadow Road in Barrington

### RIWS Signature Member, Brenda L. Bechtel

has paintings juried into several shows including the Philidelphia Sketch Club's 152nd Exhibition of small oil paintings (thru May 9th), the Newbury Art Association's 18th Annual Regional (May 1st - June 5th), National Art League's 85th Open Exhibition (May 4th) and the Cambridge Art Association (May 8th)

### RIWS Signature Member Trish Marcaccio

was selected as Wickford Art Association's "Artist of the Month" for September 2015. Her oil painting "Gift from the Sea" was juried into W.A.A.'s Poetry & Art Exhibit which takes place July 24th - August 16th, 2015. Opening Reception: July 24th, 6pm - 8:30pm. Trish was invited to exhibit her artwork at the Coastal Living Gallery in Wickford, RI beginning in July 2015.



# WaterMedia

The Official Newsletter of the Rhode Island Watercolor Society  
May 2015

Congratulations award winners from  
RIWS 119th Annual Artist Member Show

## President's Corner

### Annual Meeting 2015

Thank you for attending RIWS annual meeting. If you couldn't make it, stop by the gallery and get a copy of the 2014 annual report. In the report, we highlight all the shows, classes, workshops, and committees from 2014.

We had a fun conversation on where we would like to be in 3 years. Some feedbacks was:

- No debt
- Selling more paintings
- Membership up to 500
- More people visiting the gallery
- We are in different publications
- We have signs, flowers at entrance

We then discussed how to get to these goals. We had a lively discussion of ideas. I thank everyone for their participation. One great idea was to allow people to enter the open juried shows online (along with hand delivered entries). We are going to try this with are next show.

Thank you for helping RIWS to a successful 2015.

Jackie Canna Habig  
RIWS President

## Director's Corner

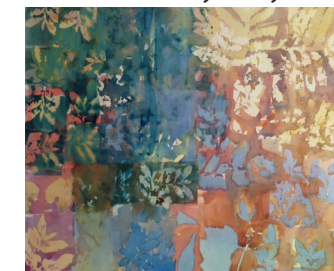
The American Watercolor Society's 148th Annual Traveling Show is finally here! This exhibit will be on display at RIWS from May 9th - June 14th, with the Opening Night Gala Reception on Saturday, May 9th at 4pm. This special event will be catered by B&M Catering, and the evening will begin with an artist demo by AWS & RIWS Signature member, Carole Berren. Admission to this event (including the demo) is \$25 per person. Please contact the gallery to make reservations. We hope to see you all there!

I would also like to thank everyone who has made generous contributions to the AWS Show. As of April 29th, RIWS has raised a total of \$2,845! All of your donations have made it possible for RIWS to host this prestigious exhibition in RI. The "AWS at RIWS" donors are as follows... *Corporate Level:* Joseph Driscoll. *Gold Level:* Raymond Andreotti, Leslie Godfrey, Elinor Thompson. *Silver Level:* Al Albrektsen, Habig & Magoon Insurance, Kris Occhino, Wanda Perkowska Coderre, Denise Petrin. *Program Level:* Denise Cornwall, Paula Correia, Nancy Daly, Bill Lane, Paola Mangiacapra, Eileen McAllister, Sally Meding, Peg Morrissey McNulty, Joan Murphy, Steve Paulson, Nancy Rowett, Norma Sumner, Judith Stuart, Madeline Von Hemert. *Support Level:* Nina Ackmann, Alyce Crowell, Sharon D. Eisman, Pauline Fay, Nancy Godfray, Margaret Lee, Donna MacLure, Toni Peterson, Jean Ricci, Garnet Ricks, Kyong Tuchapsky, Mary Volatile, Barbara Wierzbicki, C.C. Wolf. THANK YOU SO MUCH FOR YOUR SUPPORT!!!

Lori Estrella  
Gallery Director

Third Place II Awarded  
"Tired Day" by Kendra Conn

Third Place I Awarded  
"What is Left" by Cathy Chin



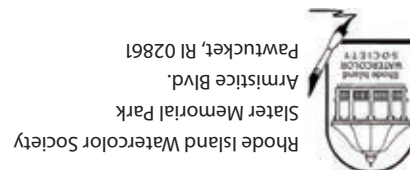
Third Place III Awarded  
"Rockport" by Al Albrektsen



First Place Awarded  
"Sole Passage" by Cynthia DiDontato



Second Place Awarded  
"Berkley at Boylston" by Bill Lane



Rhode Island Watercolor Society  
Slater Memorial Park  
Armistice Blvd.  
Pawtucket, RI 02861

REQUESTED  
SERVICE  
ADDRESS

NONPROFIT  
ORGANIZATION  
US POSTAGE  
PAID  
PAWTUCKET, RI  
PERMIT #104