

Dates To Remember

November

November 1st: RIWS Member Group Show Opening Reception 2-4pm
November 8th: Evelyn Bernal, Robin Beckwith & Sue Klas Wright Gallery Sitting (*meet the exhibiting artists*) 12-4pm
November 11th: Last day for Jerry Aissis' Fall class 10am-12:30pm
November 11th-18th: Drop-off for *Sky's the Limit* - Open Juried show
November 15th: Evelyn Bernal & Kris Occhino Gallery Sitting (*meet the exhibiting artists*) 12-4pm
November 20-21st: June Webster 2-day workshop *Class Favorites* 9am-4pm
November 22nd: Holiday Potluck Brunch & Opening Reception for *Sky's the Limit*: 12pm Holiday Brunch begins
 12:45pm Awards presented for *Sky's the Limit*
 1pm Art lecture by Jill Sanford
 2-4pm reception continues for *Sky's the limit*
November 24th: Last day for Ben Macomber's Fall Classes 6-8pm
November 26th-27th: GALLERY CLOSED FOR THANKSGIVING + BLACK FRIDAY (Gallery will be open on 11/25 + 11/28 + 11/29)

December

December 2nd: Deadline for Jan/Feb Newsletter
December 5th: Gallery open until 8pm while RIWS hosts the Slater Park Winter Wonderland Pictures with Santa on the lower level.
December 6th: Robin Beckwith Gallery sitting from 12-4pm. Gallery open until 8pm while RIWS hosts Pictures with Santa on the lower level.
December 12th: Gallery open until 8pm while RIWS hosts the Slater Park Winter Wonderland Pictures with Santa on the lower level.
December 13th: Gallery open until 8pm while RIWS hosts the Slater Park Winter Wonderland Pictures with Santa on the lower level.
December 14th: Last meeting of Monday Night Painting 6-9p.m.
December 16th-19th: Pick up from *Sky's the Limit* (before the holidays)
December 19th: Last day to view *Sky's the Limit* exhibit
December 20th-January 5th: Gallery Closed for the Holidays!

January

January 6th: Gallery re-opens for regular hours.
January 6th-10th: Drop off for New Artist & Signature Member Show and the Associate Member Show. (Also Pick up for *Sky's the Limit*- after the holidays)

***Deadline for Jan/Feb Newsletter: Dec 2nd**

Winter Wonderland

RIWS



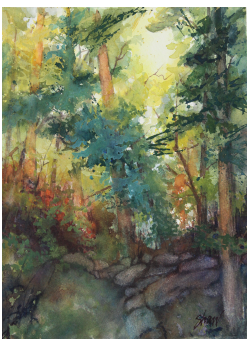
As always, RIWS will be hosting the Slater Park Winter Wonderland Pictures with SANTA on the lower level! The gallery will be open until 8pm on December 5th, 6th, 12th, and 13th!

CALL TO ARTISTS - Portrait

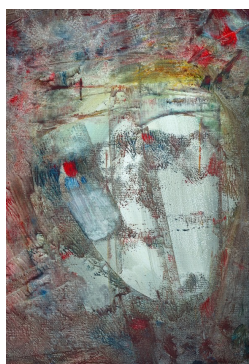
The Trescott Street Gallery invites artists to submit their work for a Juried exhibition titled "Portrait" Artists have been making portraits for centuries. We would like to see your interpretation of this classic tradition. All forms of media are accepted. The Exhibition is open to all artists with an entry fee of \$25 for up to 3 images for review. A panel of judges will select works to be shown and award \$200 best in show and (2)\$100 prizes. The three prize winners will also be awarded a 3 person show in 2016. All works must be ready to hang and displayed professionally. The exhibition will be held from January 6th—to January 27. To enter, please email up to 3 images at TSGsubmissions@yahoo.com Pay your entry fee by using the link on our website www.trescottstreetgallery.org under the "Artists tab" password 8tsg

21st Annual National Watermedia Competition

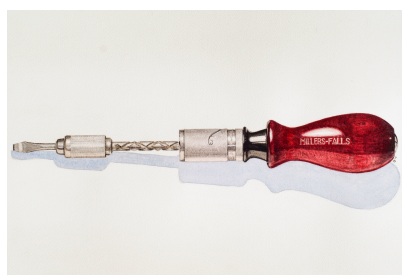
Honorable Mentions



Honorable Mention 1
 "Woodlands" by Susan Shaw



Honorable Mention 3
 "My Muse" by Rosemarie Manson



Honorable Mention 2
 "Crewed No. 29" by Geoffery Gavett



Honorable Mention 4
 "Washed Up" by Jane Brito

Rhode Island Watercolor Society Water Media Newsletter Published Ten Times A Year

Officers:

President: Jackie Habig
 Treasurer: Dennis Finlay
 Recording Sec.: Dyan Rook
 Corresponding Sec: Elinor Thompson

Directors:

Evelyn Bernal, Paula Correia, Alyce Crowell, Leslie Godfrey,
 Jacquelyn Hayes, Eileen McAllister, Denise Petrin

Editor:

Lori Estrella-Auger, Gallery Director

Design & Layout:

Ruby Dorchester, Gallery Assistant
 Sam Green, Gallery Assistant

Mail news items to:

Rhode Island Watercolor Society
 Slater Memorial Park
 Armistice Blvd.
 Pawtucket, RI 02861

Email to: riwsgallery@gmail.com with
 "Newsletter Submission" in the subject title.

*Gallery Hours:

Wednesday - Saturday: 10am - 4pm
 Sunday: 12pm - 4pm
 Closed Mon, Tues & Holidays



WaterMedia

The Official Newsletter of the Rhode Island Watercolor Society
 November/December 2015

Congratulations to the award winners of the 21st Annual National Watermedia Competition



David Masland Memorial Award (\$1,500)
 "Pull Me" by Thomas Rebek



Ruth Findley memorial Award (\$1,000)
 "White Poppies" by Evelyn Bernal



Ruth & Wm Memorial Award (\$500)
 "Reflections in the Harbor" by Craig Masten



Raymond Annino Memorial Award (\$270)
 "Jazzy Red II" by Denise Athanas



Fujie Wright Memorial Ward (\$250)
 "It's A Ball" by Donna Maclure

President's Corner

The 2016 calendar is finalized, the workshops are booked, and membership renewals are in the mail. I hope all members take the time to fill out their renewal for 2016.

At the National Show opening, our first prize winner, Thomas Rebek had some comments which struck a cord with me. He mentioned to the crowd that he is a member of many art societies and that RIWS is unique. At RIWS we have our wonderful gallery. Other art organizations beg local libraries and other businesses for a chance to exhibit. At RIWS, we exhibit a new show every month. Our members have over 5 opportunities a year to enter juried art shows.

RWIS offers small group shows where 5-6 artist members exhibit together in the gallery. This is a great experience to select your artwork to show and invite family and friends. This is one of the opportunities we can offer our member because we have a gallery. We also have great classroom space to offer workshops and classes. Next year we have 3 major workshops and numerous shorter workshops.

You membership dues help to fund the costs of running a gallery. This is what you sign up for when you renew your membership. Please take the time to renew.

Jackie Habig
 President

Director's Corner

November and December are here, which means the holidays are just around the corner... This is a busy time for us at RIWS, as we finish off our 2015 programs and begin preparing for the new year. You can read more about what's happening at RIWS over the next two months in this newsletter. Make sure to periodically check out our website for more information on what's in store in 2016!

As our President, Jackie Habig, mentioned... We are so excited about what we have planned for the new year. Along with the talented artists we have visiting

in 2016, we are also planning 2 fundraisers, and we hope that members will want to participate as volunteers. There are several ways to help out and all are listed in the membership renewal packet that you will be receiving in the mail shortly. Please read the volunteer and committee forms carefully, and let us know where you would like to help out. We love working alongside our members to make our events fun and successful!

Lori Estrella-Auger
 Gallery Director



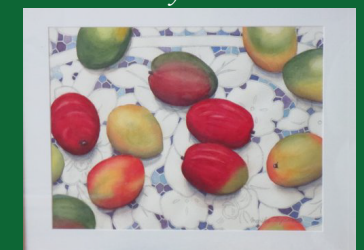
Dr. Stanley Ross Memorial Award
 *For Traditional Painting (\$150)
 "Carved Flutist" by Susan Rustad-Smith



Mary Lou Award (\$110)
 "White Clematis"
 by Hollis Machala



Horace & Ada Macomber Memorial Award (\$100)
 "Magic on the Rocks" by Pamela Haynes



Susan L. Sumner Memorial Award (\$100)
 "Mango and White Lace" by Mariko Toyama



Dennis R. Wyckoff Award (\$75)
 "Mike" by Paola Mangiacapra

See the back page for this years Honorable Mentions!