

Monday Night Painting - Every Monday from 6-9pm

Members: \$5.00 Non-members: \$8.00

Come Monday evenings for informal painting with signauter memberers Joan Croce and Maryy Wojciechowski. No instruction, just painting with fellow artists. A critique is held around 8pm.

LAST NIGHT PAINTING IS DEC 14TH They will return in the new year on January 4th, 2016

June Webster - 2 Day Workshop: "Class Favorites" (All levels)

Date and Time: November 20th - 21st Each Day 9am-4pm

Members: \$80 (1-day) \$160 (2-days) Non-Members: \$100 (1-day) \$200 (2-days)

Signup Deadline: November 14th

June has been an instructor at the New Britain Museum of American Art for over 20 years. Drawing inspiration from the pieces in the museum's permanent collection or the artwork from the museum's special exhibitions, she keeps her lesson plans ever changing and her students returning year after year. For this workshop June will be reviving a few of her classes' favorites. Working from June's reference materials, these lessons will explore color theory, the importance of values and edges, and a variety of painting techniques.



Cancellation Policy: Cancellations made more than 30 days prior to the start of the event receive a full refund. Cancellations made 7-30 days prior to the start of the event will be charged a minimum of 50% of the original price. *No refunds will be given for any cancellations made less than 7 days before the scheduled date of the event; or after the event has started.

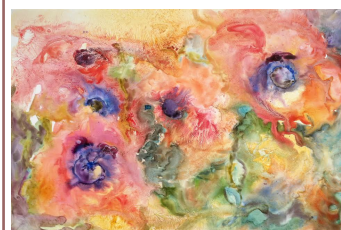
Current Exhibition:

FRESH PAINT

November Member Group Show

November 1st - November 19th, 2015

Featuring work by artists Robin Beckwith, Evelyn Bernal, Sally J. Meding, Kristina N. Occhino, and Sue Klas Wright



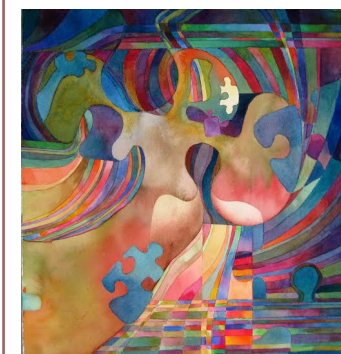
"Poppies" By Robin Beckwith

Robin Beckwith of Warwick, RI Robin received a BFA in Painting upon graduation and continued to pursue studies at RISD, receiving Certificates in Computer Graphics and Decorative Painting. Robin felt at home living in New England, finding it an accepting and exciting place for artists, and chose to make it her home. Robin is a signature member of the Rhode Island Watercolor Society, New England Watercolor Society, and North East Watercolor Society, as well as a juried artist member of the WickfordArt Association, North Shore Arts Association, and South County Art Association. She is a member of the International Society of Experimental Artists.



"Landscape" By Evelyn Bernal

Evelyn Bernal of Lincoln, RI "As far and I can remember color has fascinated and affected me deeply. This may be because I have been exposed to its vibrancy since a very early age. I was born and raised in the Dominican Republic where explosions of color happen everywhere you look under the intense Caribbean light. When I visit unspoiled places I embrace the visual as well as the spiritual and it is the hope that I can transmit their power and magical energy through my work. I have lived about 40 years in the US. It is my pleasure to call New England my home."



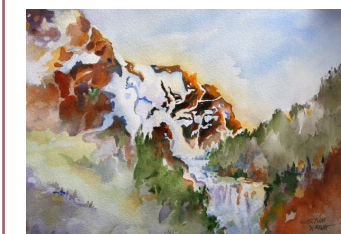
"Spectral Angel" By Sally Meding

Sally Meding of Natick, MA Sally Meding is a signature member of the Southwestern Watercolor Society and native of London, UK., she obtained a PhD in Freiburg, Germany and immigrated to the United States in 1990. She has a studio in Natick, MA and teaches watercolor and drawing in the Metro West area. A versatile artist creating mostly semi-abstract works in watercolor on paper. Her art work is about playing the game of "contrasts" particularly warm against cool, bright against dull and light against dark. She enjoys the challenge of painting a wide variety of subject matter where a "contrast" caught her eye. Sally finds color fascinating, and spends much time reading about it, and typically she uses a kaleidoscope of harmonious color, interesting shapes and textures to dramatically emphasize how she perceives our fragile world.



"Quiet Afternoon, Hyannis Harbor" By Kris Occhino

Kris Occhino of Attleboro, MA Kris Occhino holds a Bachelor of Science degree in Studio Art from Skidmore College, Saratoga Springs, NY and a Masters in Art Education from Rhode Island School of Design. Kris teaches painting in her Treetop studio in Attleboro, MA and at the Attleboro Arts Museum. She has done painting demonstrations for many art groups and for Foxboro Cable TV. Kris Occhino's award winning work in watercolor, and acrylic have been selected by jurors for regional and national shows and have been exhibited in museums, art associations, galleries, and art festivals in New England. Kris is a member of the Franklin Art Association, Foxboro Art Association, Cape Cod Art Association, the New England Watercolor Society and the American Watercolor Society.



"Colorado Rush" By Sue Klas Wright

Sue Klas Wright of North Kingstown, RI Sue Klas Wirhgt has taught at The Rhode Island Watercolor Society and the Providence Art Club, and shows her work at the New England Watercolor Society, Wickford Art Association, Rhode Island Watercolor Society and Providence Art Club. "The power of mountains and the sea, and the wilderness are my inspiration. It's the legacy of family camping trips during my childhood when the sounds of trickling streams, the feel of pine needles underfoot and the heat of the campfire worked their magic on me. I try to convey the mood of these special places in my paintings. When I paint a portrait I try to capture the "spark" of individuality that shines from each person. My work ranges from realism to semi-abstract and I work with watercolors and oils."

Attention RIWS Members!

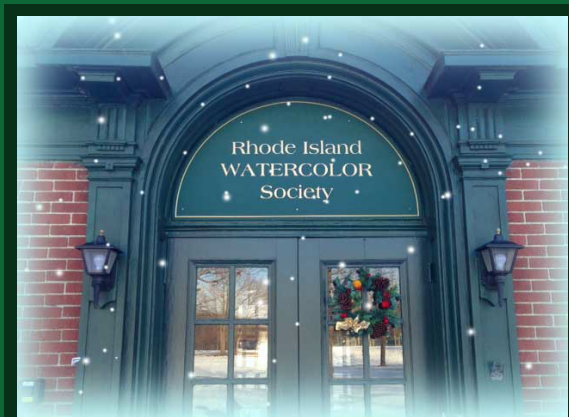
Holiday Art will be accepted starting November 1st!

Start bringing in your winter and holiday items for sale this month! The holidays are a time when gallery visitors are always looking for small gifts for friends and family, so it is a perfect opportunity to bring some of your work into the gallery.

The following items are most popular this time of year:

- Cards
- Prints
- Small Original Paintings
- Ornaments
- Coasters
- Tiles

Cards and prints should be skrink-wrapped or in another type of protective plastic. Please bring a list of all items being dropped off. For pricing, members recieve 75% commission on all items that sell. No tax on art in Rhode Island!



"Sky's The Limit"

Open Juried Show (all 2D media)

November 22 - December 19th

Juror: June Webster

RIWS Holiday Brunch & Opening Reception:

Sunday, November 22nd 12pm - 4pm

12pm - Brunch Begins

12:45 - Sky's the Limit awards presented

1pm - "Art for your Mind" Art Lecture with Jill Sanford

2 - 4pm Sky's the Limit Reception continues

Sky's the Limit is an open themed show where the sky's the limit! You can also take the title of this theme literally and incorporate the sky, or elements of the sky, in your work.



Juror: June Webster

SKY'S THE LIMIT

NOV - 22 - DEC 19

Opening Reception & RIWS Annual Holiday Brunch: Sunday, Nov 22nd.

Brunch begins at 12pm. Awards presented at 12:45pm. Jill Sanford demo at 1pm. Reception continues from 2-4pm.

